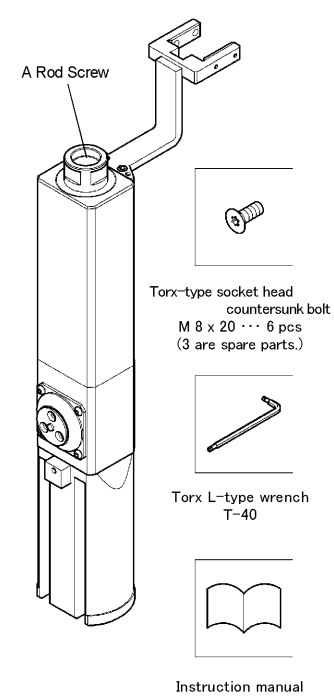
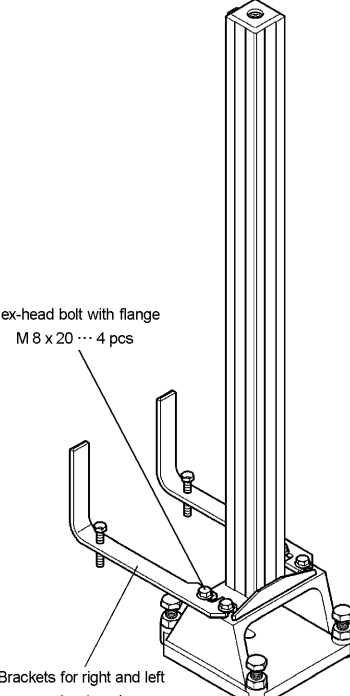
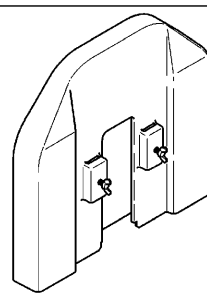
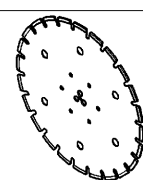


PLUNGE CUT ATTACHMENT PC-16 INSTRUCTION MANUAL

【1】 Before Using the Plunge Cut Attachment PC-16

This “Plunge Cut Attachment PC-16” product is used by attaching to SPN series Drill Head. Read this manual and the Drill Head instruction manual carefully, and use the product properly according to the “WARNING and CAUTION.” This manual presents an example for this product when installed on the SPN-201At Drill Head.

【2】 Content of Packing

<p>Main Body of Plunge Cut PC-16</p>  <p>A Rod Screw</p> <p>Torx-type socket head countersunk bolt M 8 x 20 ... 6 pcs (3 are spare parts.)</p> <p>Torx L-type wrench T-40</p> <p>Instruction manual</p>	<p>Pole Base for □ 49 Plunge Cut (Optional)</p>  <p>Hex-head bolt with flange M 8 x 20 ... 4 pcs</p> <p>Brackets for right and left ... 1 set each</p>	<p>16" Plunge Cut Cover (Optional)</p>  <p>Blade for PC-16 (Optional) Silent Blade for PC-16 (Optional)</p>  <table border="1"> <tr> <td>Mounting hole diameter</td> <td>8mm</td> </tr> <tr> <td>P.C.D of three fixing holes</td> <td>28mm</td> </tr> <tr> <td>Blade base thickness</td> <td>2.4mm</td> </tr> <tr> <td>Diamond tip thickness</td> <td>4.5mm</td> </tr> <tr> <td>Blade size</td> <td>8" · 10" · 12"</td> </tr> <tr> <td>Silent Blade size</td> <td>14" · 16"</td> </tr> </table>	Mounting hole diameter	8mm	P.C.D of three fixing holes	28mm	Blade base thickness	2.4mm	Diamond tip thickness	4.5mm	Blade size	8" · 10" · 12"	Silent Blade size	14" · 16"
Mounting hole diameter	8mm													
P.C.D of three fixing holes	28mm													
Blade base thickness	2.4mm													
Diamond tip thickness	4.5mm													
Blade size	8" · 10" · 12"													
Silent Blade size	14" · 16"													

【3】 Specifications

Model		PC-16
Maximum Cutting Depth		282mm
Maximum Blade Diameter		418mm(16")
Pilot Hole Diameter		110mm(4")
Drill Head for Driving		SPN series (SPN-201At, -201Uw, -201Ax, -201Ui)
Main Body of Plunge Cut PC-16 attaching screw		A Rod Screw
Dimensions and Mass	Main Body of Plunge Cut PC-16	108 x 259 x 665
		7.5kg
	Pole Base for □49 Plunge Cut	165 x 307 x 896
		11.3kg
16" Plunge Cut Cover	445 x 63 x 425	
	1.6kg	

※ When you use SPN-201Ui, -201Uw, you need 「Reducer Unify → A Rod Screw」.

【4】 WARNING and CAUTION

⚠ WARNING

1. Affix the Pole Base for □49 Plunge Cut firmly in place.
 - ⊙ Do not use the Vacuum Pad. If this is not affixed securely, the Pole Base for □49 Plunge Cut may become lifted off the ground, and is extremely dangerous.
2. Be sure to unplug the power of the Drill Head when attaching or removing the Main Body of Plunge Cut PC-16, 16" Plunge Cut Cover, or Diamond Blade.
3. Attach the Diamond Blade securely. Be sure to install the 16" Plunge Cut Cover during operation.
4. Take safety measures.
 - ⊙ The Diamond Blade penetration side is very dangerous. Water for cutting may splash. To avoid splashing of this water onto persons or objects, make sure to take protective measures or take processing measures before starting operation.
 - ⊙ To avoid falling or dropping of cut concrete blocks, hold it securely with a clamp before starting the cutting operation.
5. Never touch the shaft or Diamond Blade when it is rotating.

⚠ CAUTION

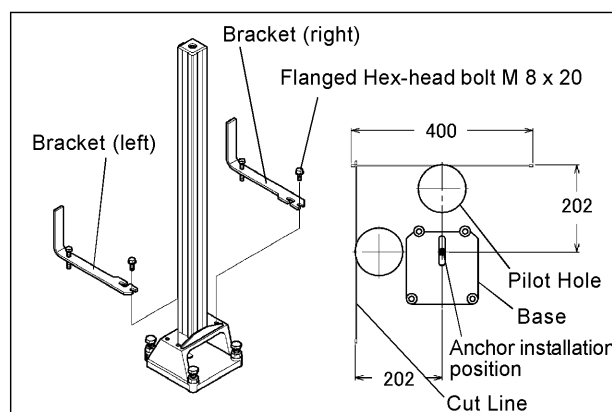
1. Use a Drill Head from the SPN series (SPN-201At, -201Uw, -201Ax, or -201Ui).
 - ⊙ This attachment is designed only for the "SPN series." It cannot be used for other Core Drills.
2. When performing the cutting operation, make sure to supply water from the Water Cock provided on the Drill Head.
3. When using a Blade of 12" or more, use the step-cut method with a Blade of 10" or less. Cutting without the step-cut method may cause seizure of the Blade or reduction in operating efficiency.

【5】 Directions for Use (when step cutting with a 10" or 16" Blade)

Tools to prepare

○ 13mm and 41mm wrenches

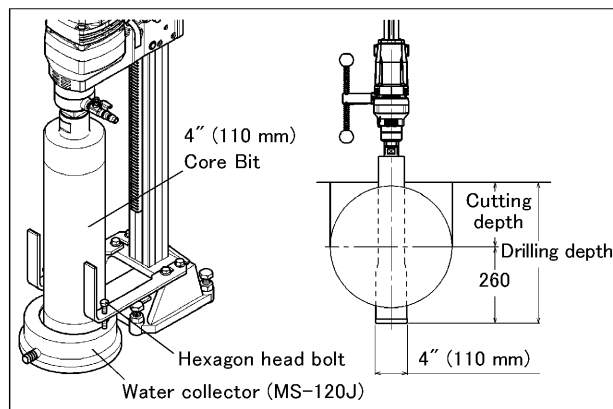
- 1) Using a 13mm wrench, install each Bracket for right and left to the Pole Base for □49 Plunge Cut with M8x20 flanged hex-head bolts.
- 2) In case of a corner cut, install an anchor at the position $202 \pm 27\text{mm}$ from the Cut Line (outside of the Blade), and fasten the Pole Base for □49 Plunge Cut.



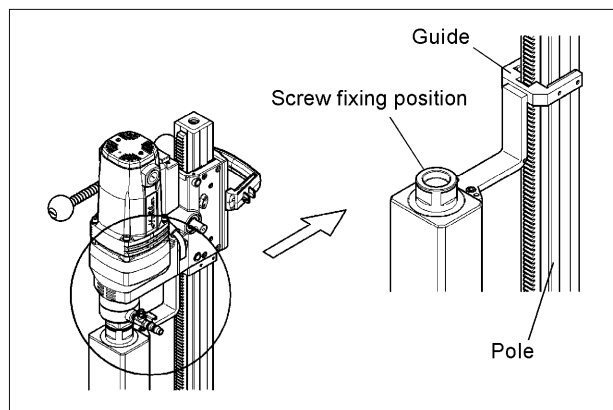
- 3) Bore the Pilot Hole using the 4" (110 mm) Core Bit. The drilling depth of the Pilot Hole is the cutting depth plus 260mm. Fasten the Water Collector MS-120J with the hexagon head bolt on the bracket.

POINT

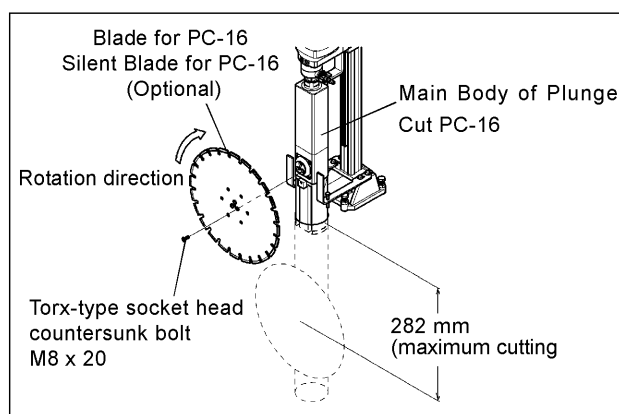
Note that the position of the Pole Base for □ 49 Plunge Cut must not change after boring the Pilot Hole. Change of the position may cause seizure of the Blade when cutting.



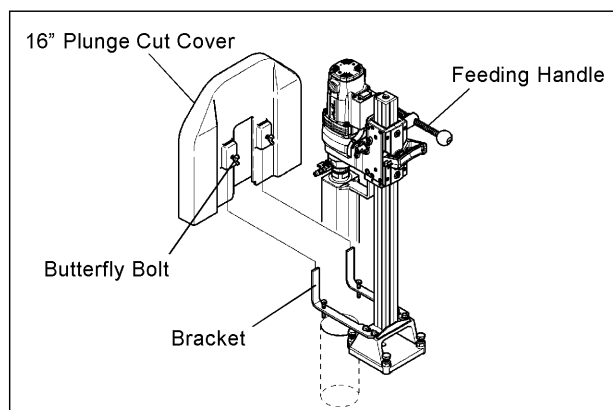
- 4) Using a 41mm wrench, screw the Main Body of Plunge Cut PC-16 into the Main Shaft of the Drill Head to attach. At this time, position the Guide so as to pinch the pole.



- 5) Using the torx L-type wrench (T-40) provided in the package, install the 10" Blade for PC-16 with three M8x20 torx-type socket head countersunk bolts.



- 6) Insert the 16" Plunge Cut Cover onto the Bracket, and fasten it with Butterfly Bolts. Then, adjust the position of the Bracket so that the 16" Plunge Cut Cover does not contact the Main Body of Plunge Cut PC-16, and fasten it permanently.



- 7) Start supplying water from the Water Cock provided on the Drill Head.

⚠ CAUTION

Position the Water Cock so as not to contact with the 16" Plunge Cut Cover when cutting.

-
-
- 8) Turn on the switch of the Drill Head to rotate the Blade.
 - 9) Turning the Feeding Handle, perform cut-in slowly.
 - 10) When you use the Automatic Feeding System, please cut the depth more than one third of the blade by hand. Then, please set the drill load setting as follows, and start to cut.
In case you use EHAC-70At(-70Ai), please set below 「-2」
In case you use EHAC-130At, please set below 「15」
In case you use EHAC-130Ai, please set below 「8」

⚠ WARNING

If an abnormal condition occurs in the Drill Head, etc. during cutting operation, turn the switch off immediately.
--

- 11) When cutting is finished, turn the Feeding Handle to pull out the Blade, and turn off the switch of the Drill Head. Then, stop the water supply.
- 12) Remove the 16" Plunge Cut Cover.
- 13) Change to the 16" Blade, and repeat the procedure from 6) to 11) described above. In case of corner cutting, the operation can be continued using the same Anchor Bolt.

【6】 Maintenance and Repair

- ◎ Perform cleaning and maintenance after finishing the operation.
- ◎ This machine is manufactured with strict precision. Therefore, if it stops working properly, never repair it yourself. Please contact your local dealer or Consec branch office.